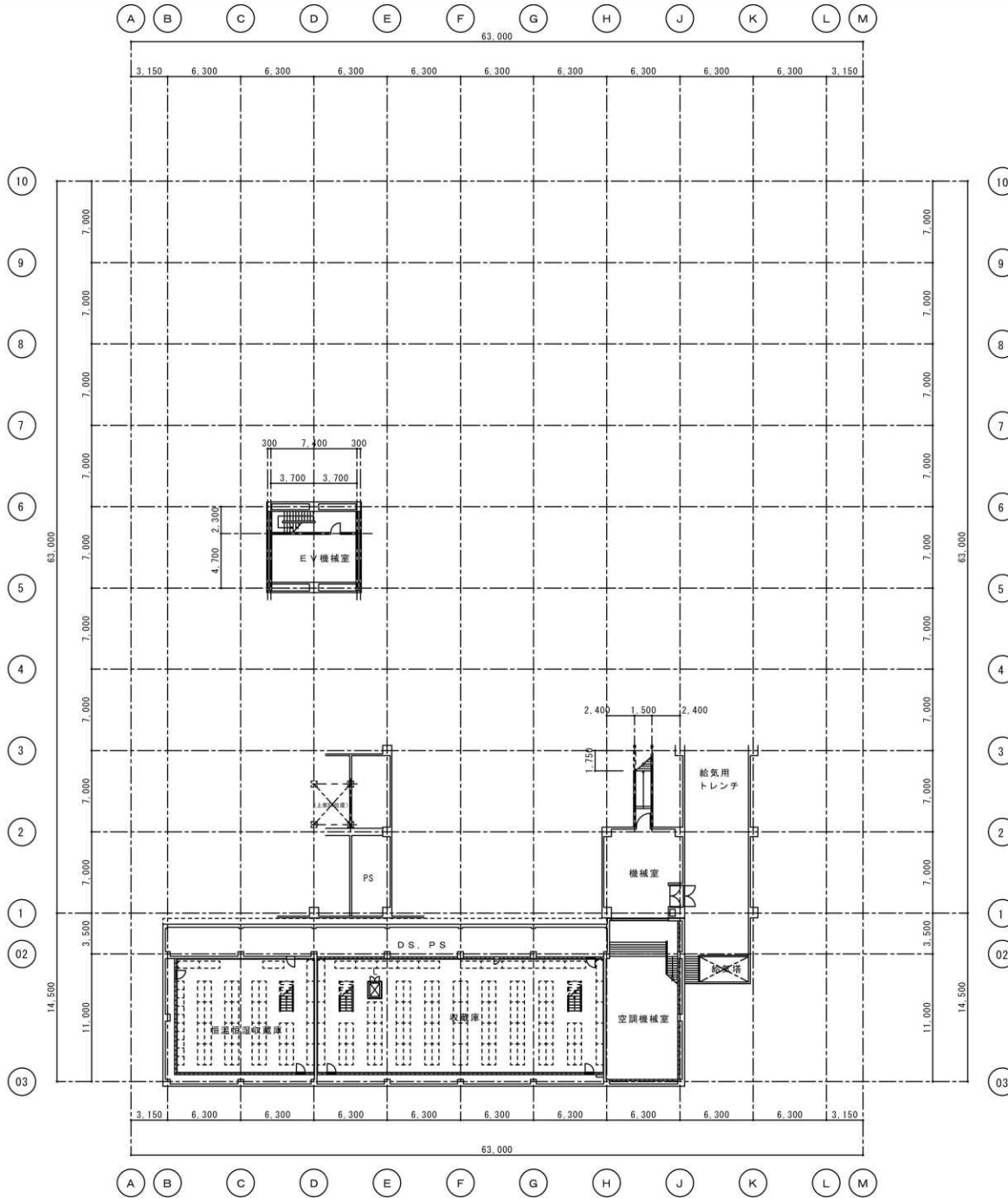
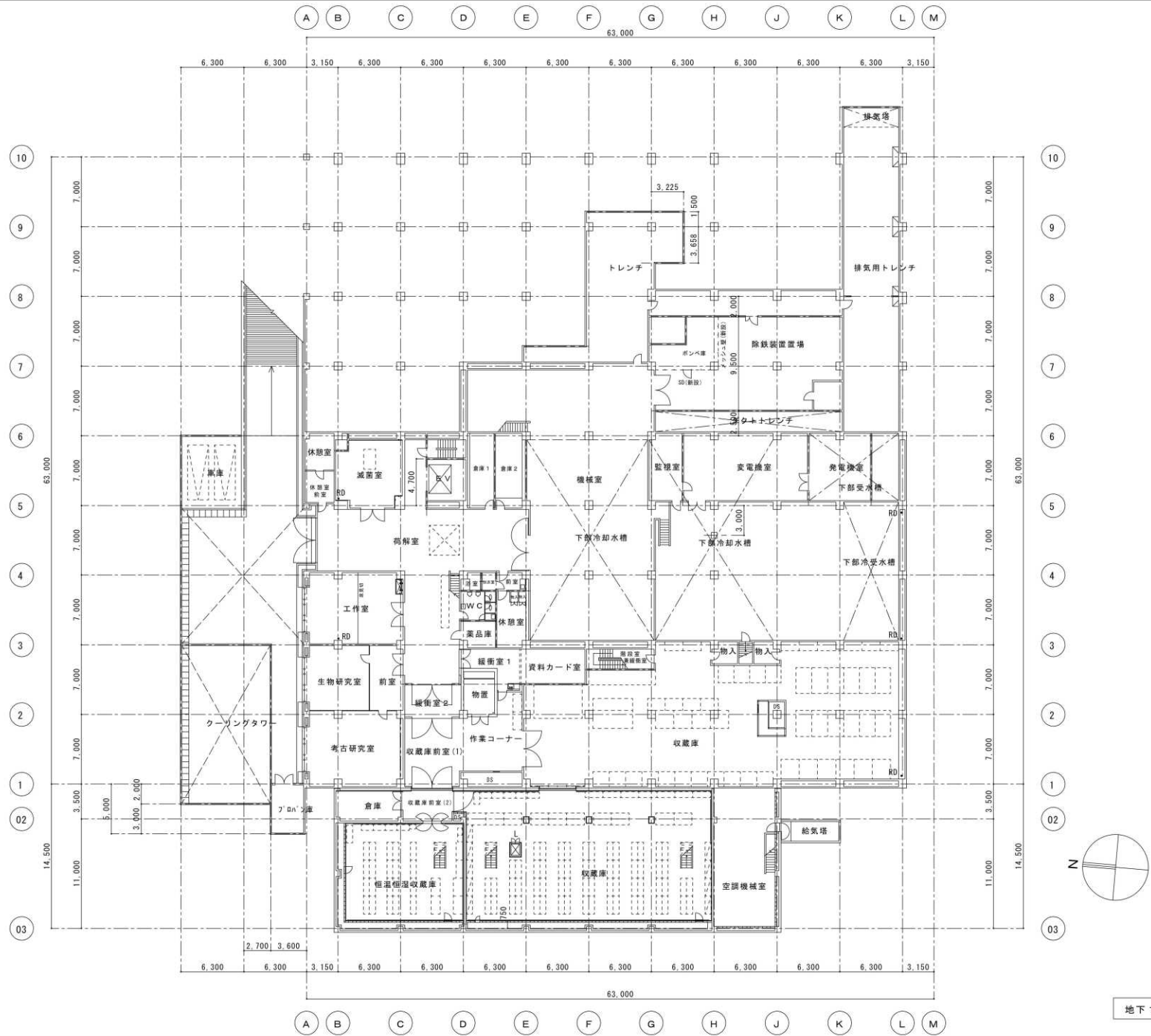


地下 2 階平面圖 S=1:200 改修後



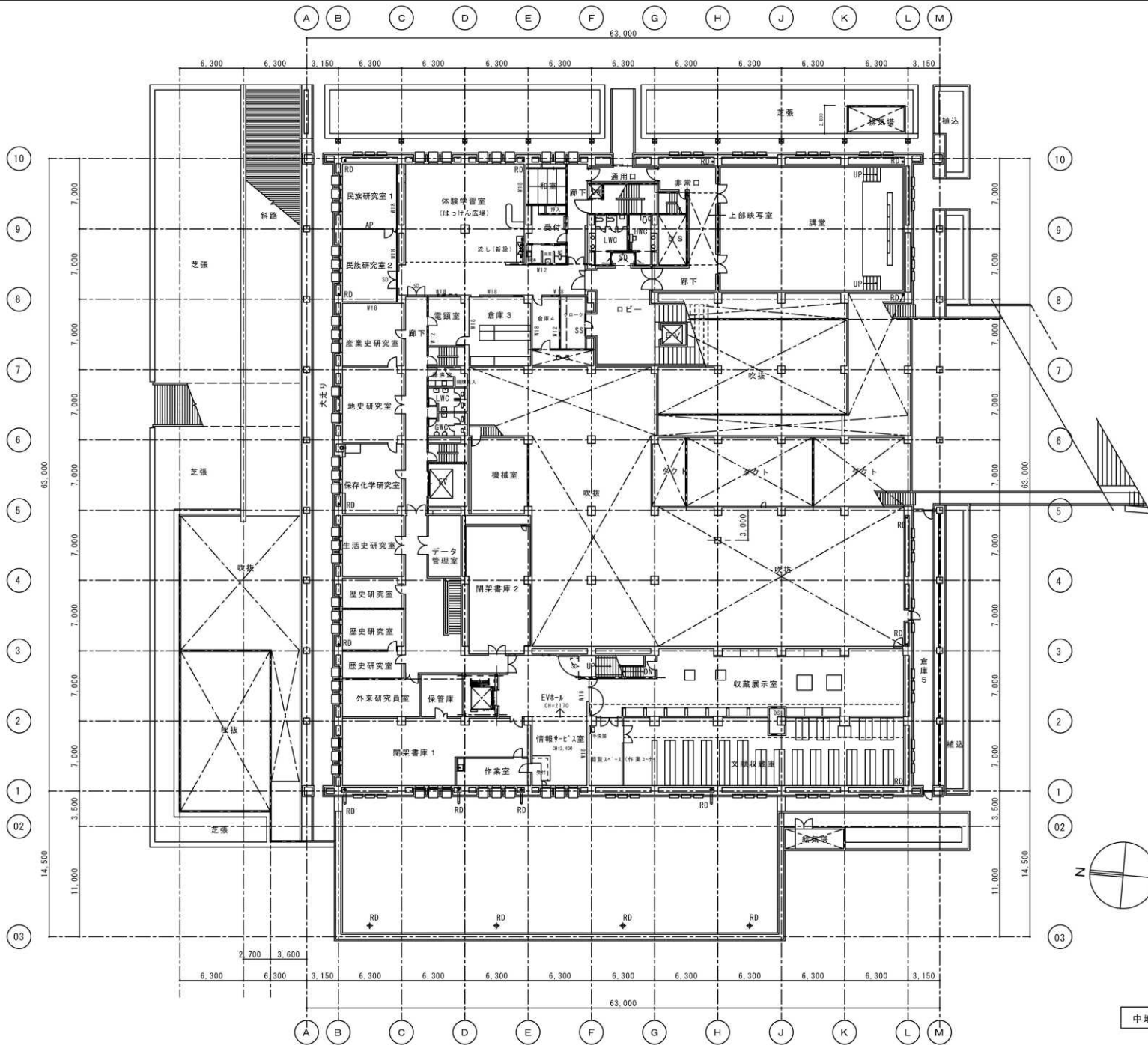
中地下2階平面図 S=1:200

改修後



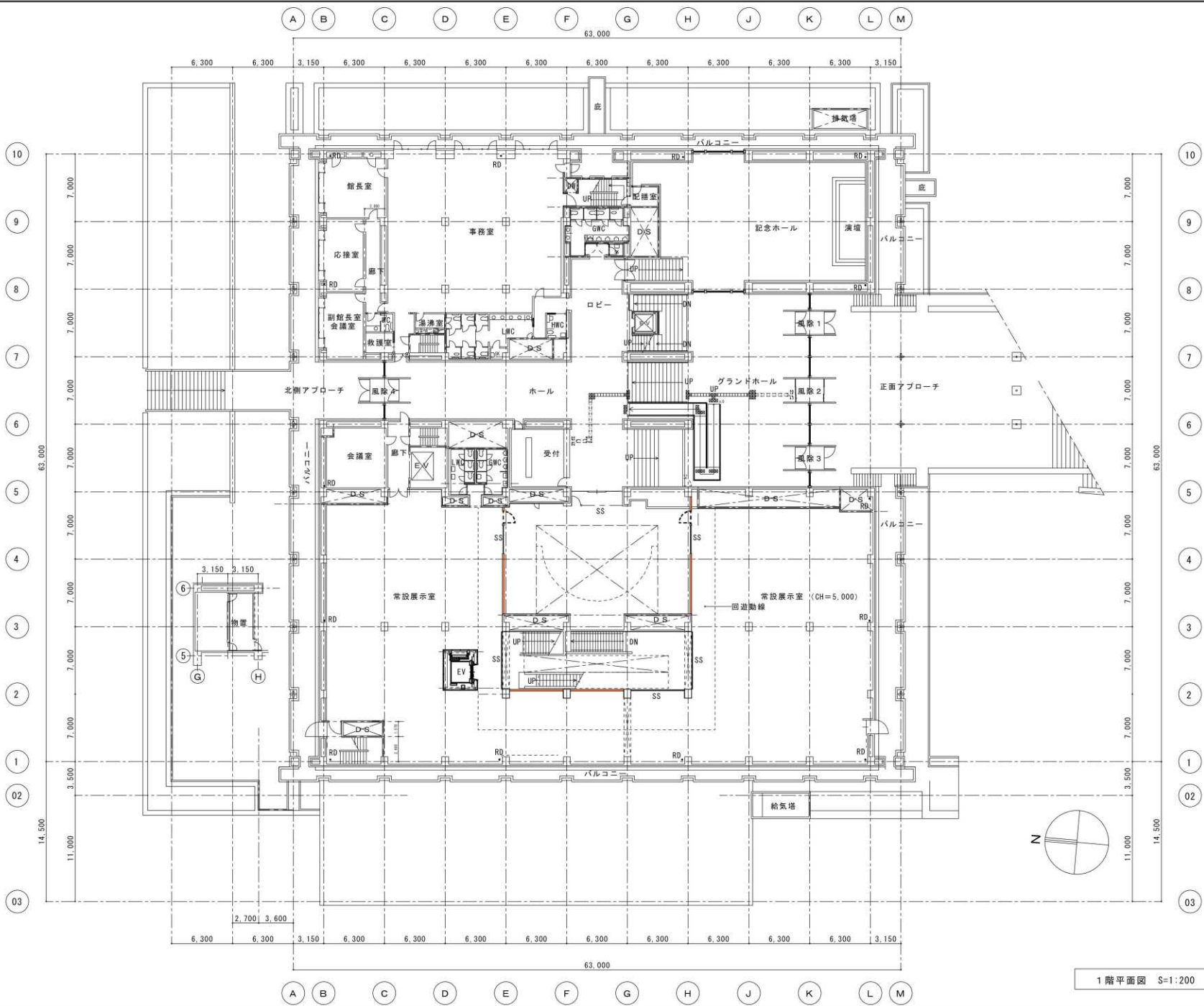
地下1階平面図 S=1:200

改修後

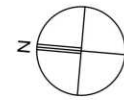
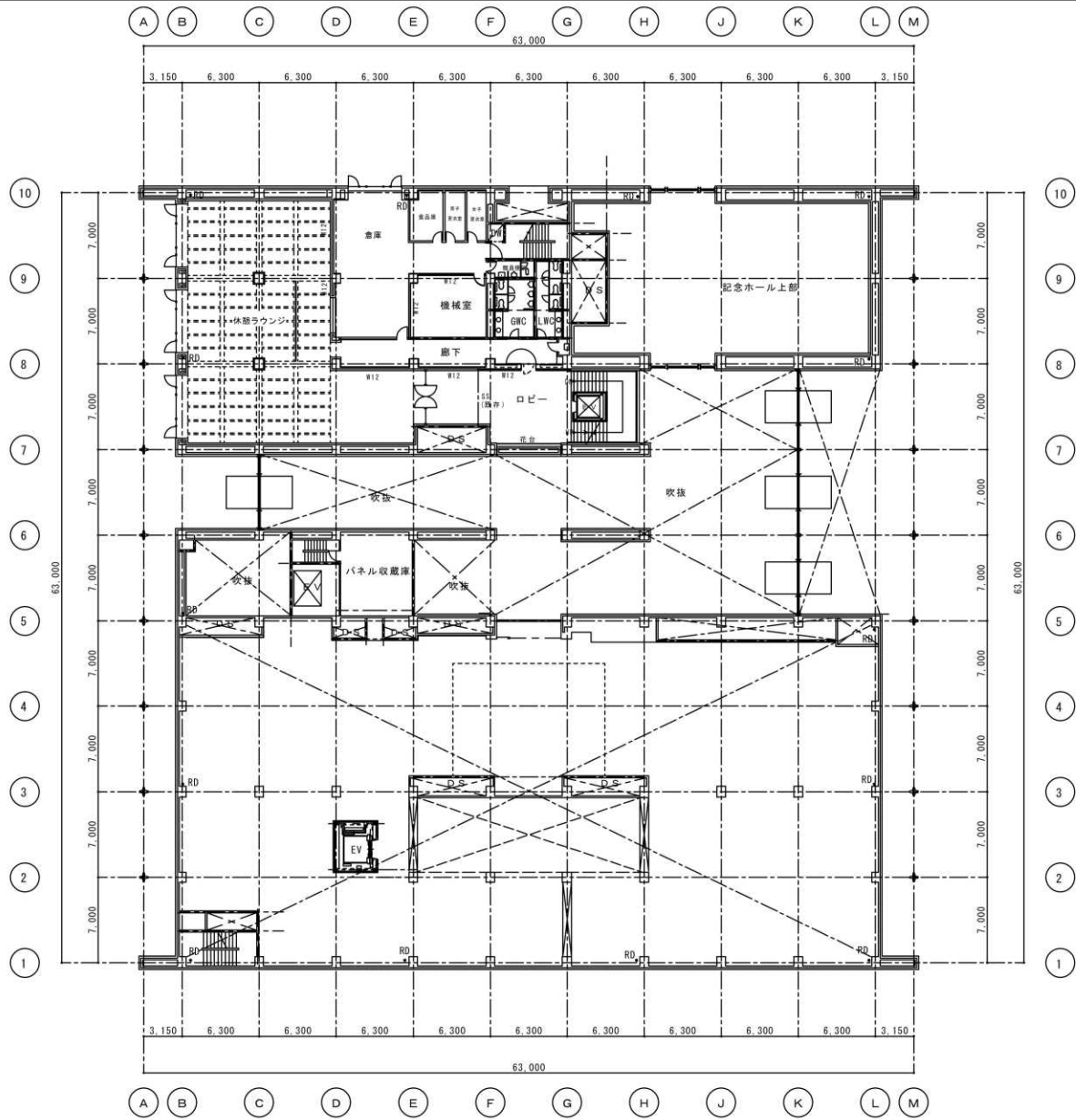


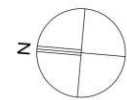
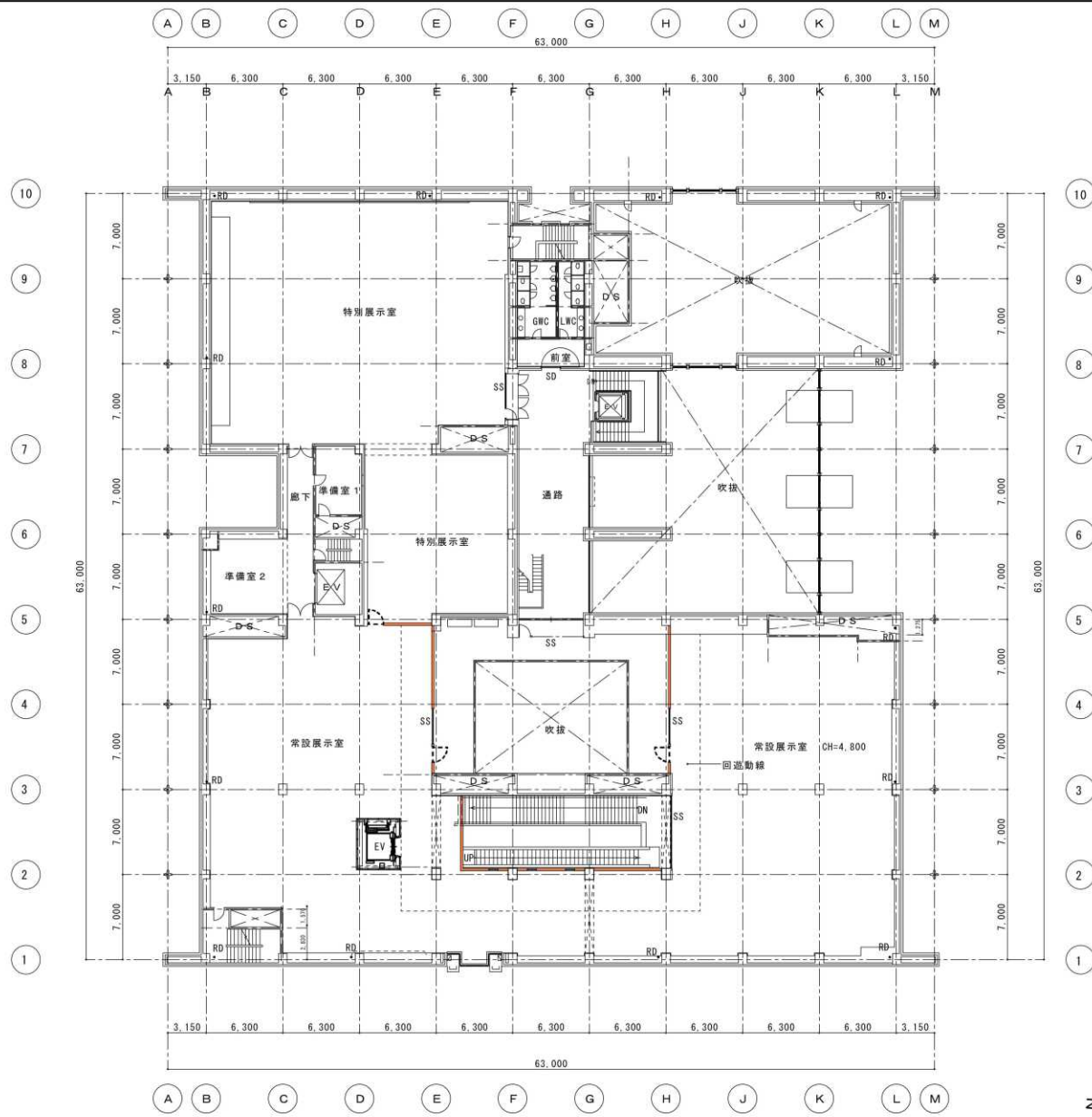
中地下1階平面図 S=1:200

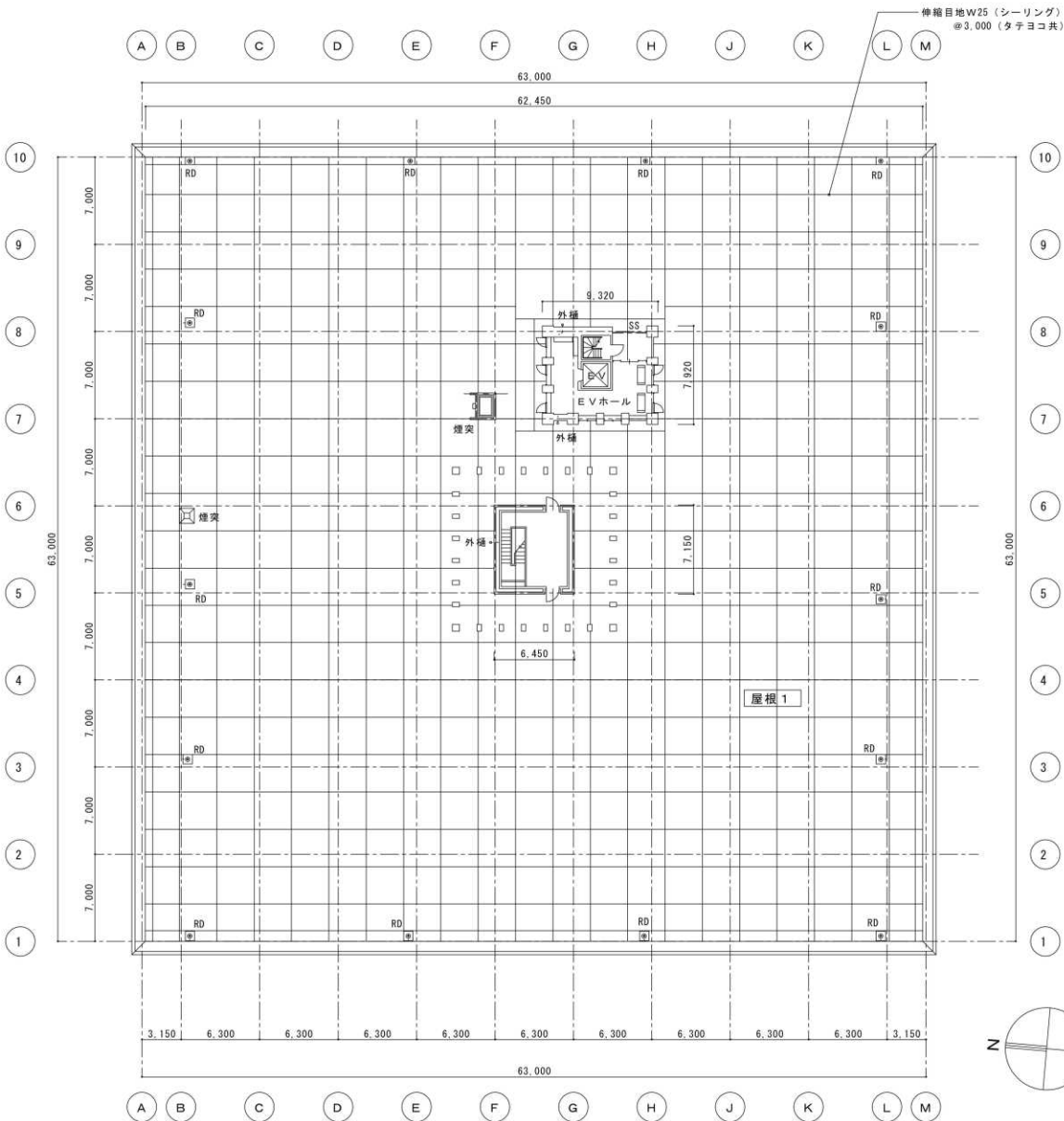
改修後



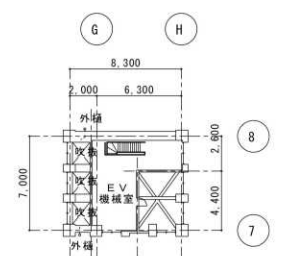
1階平面図 S=1:200 改修後



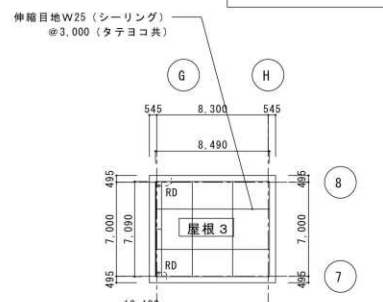




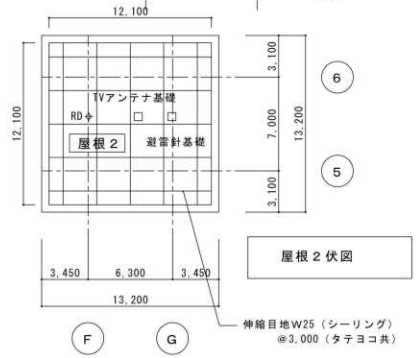
E V塔屋 2 階平面図

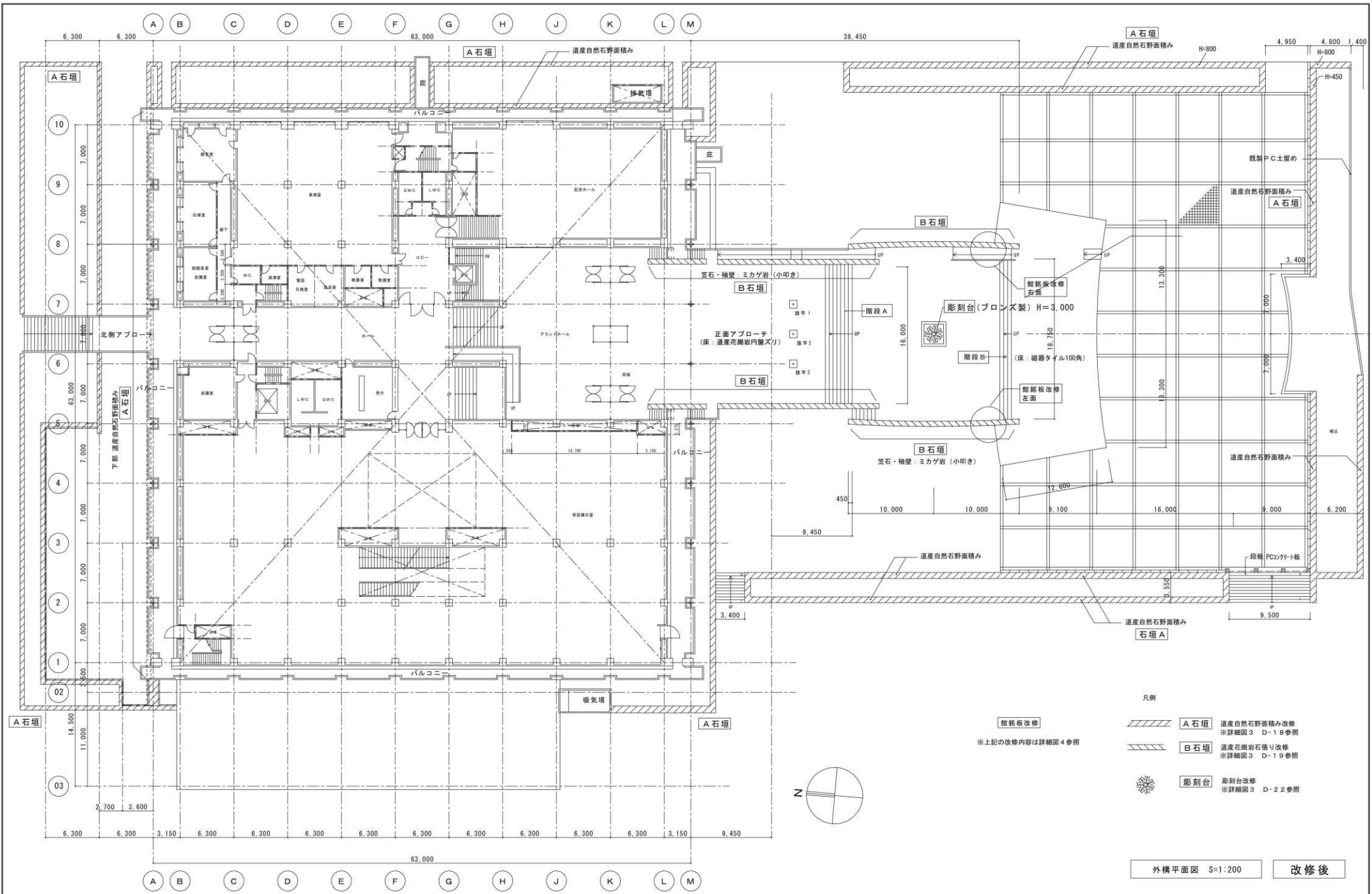


屋根 3 伏図



屋根 2 伏図





- 凡例
- A石垣** 遺産自然石野面積み改修
※詳細図3 D-18参照
 - B石垣** 遺産花崗岩石張り改修
※詳細図3 D-19参照
 - 彫刻台** 彫刻台改修
※詳細図3 D-22参照

筋絡板改修
※上記の改修内容は詳細図4参照

