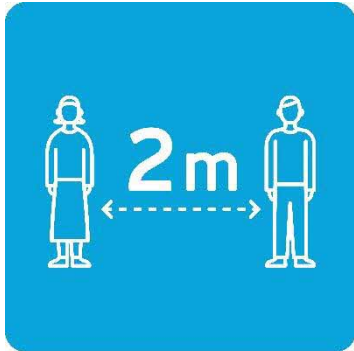


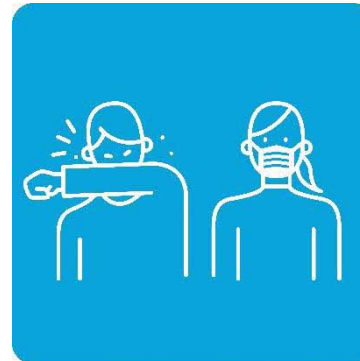
We ask for residents of Hokkaido to cooperate and adopt  
the New Hokkaido Style



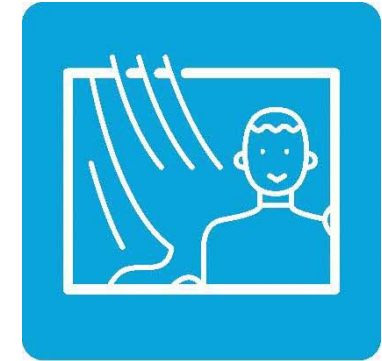
For the time being,  
keep a safe distance



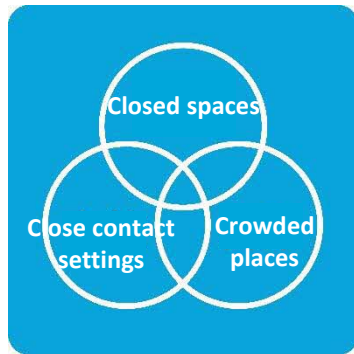
Wash your hands



Cough etiquette



Circulate the air



Avoid the three "C"s



Consider using options  
such as take-out meals  
or food delivery  
services



Make good use of  
online services



New Hokkaido Style,  
Our New Normal

Let's begin living in the New Hokkaido Style

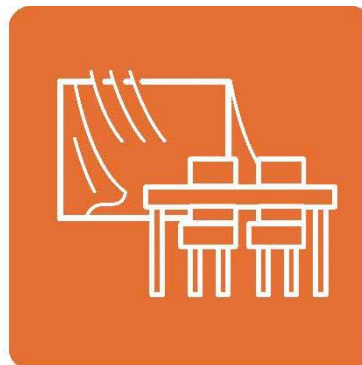
**We ask for businesses in Hokkaido to cooperate and implement the following  
7 Points upon reopening**



**Ensure that all staff wear masks and frequently wash their hands**



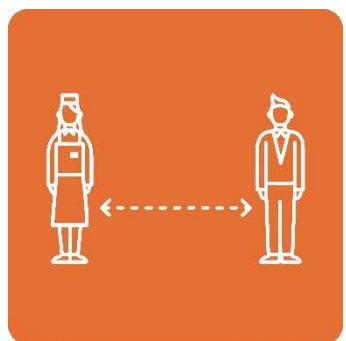
**Monitor the health condition of the staff**



**Regularly ventilate and air out your facility**



**Regularly sanitize and wash facility equipment**



**Ensure that all staff keep a safe distance**



**Call upon customers to follow proper cough etiquette and wash their hands**



**Proactively inform customers about your efforts**



**New Hokkaido Style,  
Our New Normal**

**Let's begin living in the New Hokkaido Style**