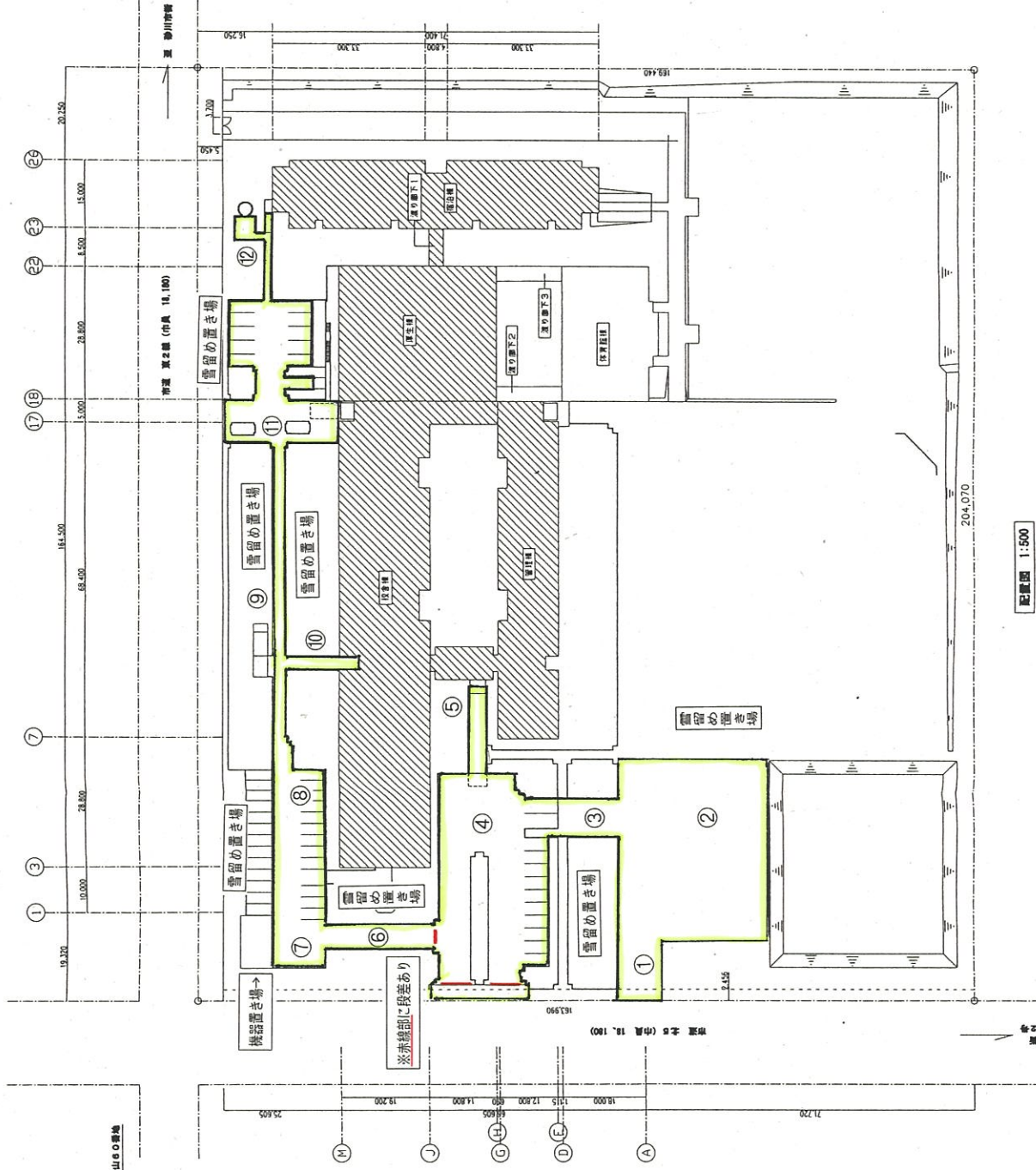


案内図 1:25,000

除雪区域及び面積

①	②	③	④	⑤	⑥	⑦	⑧	⑨	⑩	⑪	⑫	合計
6 m	30 m	16 m	25 m	5 m	24 m	11 m	16 m	1 m	16 m	20 m	1 m	
x	x	x	x	x	x	x	x	x	x	x	x	
15 m	40 m	8 m	38 m	15 m	5 m	11 m	33 m	70 m	3 m	30 m	30 m	3,960 m
=	=	=	=	=	=	=	=	=	=	=	=	
90 m	1,200 m	128 m	950 m	75 m	120 m	121 m	528 m	70 m	48 m	600 m	30 m	



配置図 1:500